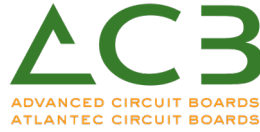


Orbital systems  
 Launchers  
 Satellites  
 Ground segments  
 Balloons  
 Transversal competencies



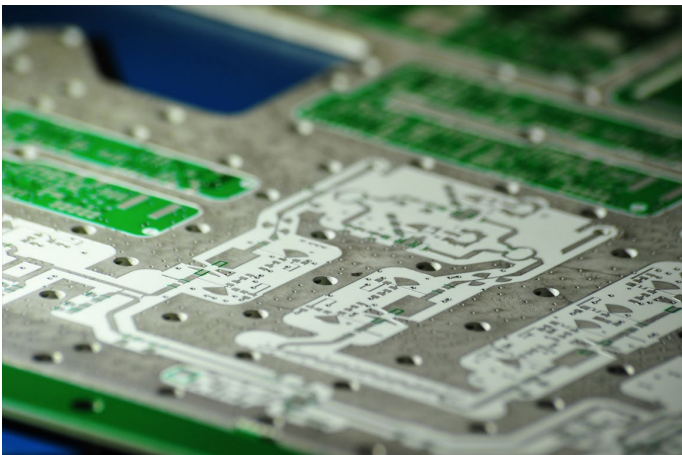
Group ACB is a Printed Circuit Board manufacturer, we have three factories working on the high technology and high reliability sectors including Space and New Space industry.

We offer Quick Turn Around production and standard leadtime in small or medium quantity.

Our factory Atlantec is specialist in high frequency application such as antenna, radar applications, Flexible, Flex-rigid PCB and others for high reliability applications.

## COMPETENCIES & CAPABILITIES

Group ACB – Atlantec factory is working for several small sat, cube sat, nano sat and LEO/MEO program especially for the PCB based Antenna in material such as PTFE and others high frequency material. We also produce PCB for calculation unit, power conversion and other electronics application used in satellite, satellite sensors and imager or other equipment's. We work from the early steps of the project offering mock-up manufacturing up to ESA qualified space model (can be in Atlantec or in ACB factory withing a ESA PID).



# ACB - ATLANTEC

## PRODUCTS & SERVICES

Manufacturing of your PCB:

- Rigid
- Sequential Rigid
- HDI Rigid
- Flexible
- Flexible-Rigid
- Flexible-Rigid HDI
- IMS
- CIC
- Special thermal management solutions
- High frequency (several materials including PTFE, ETFE, Hydrocarbon-Ceramic, PPE/MPPE...)
- Specials

## MAJOR SPACE PROJECTS & REFERENCES

ESA Heritage within the group on several Satellite program from 2016 (sentinelle, Galileo, Proba...).

## POINT OF CONTACT

**ADDRESS** ZI de la Croix Blanche  
44260 MALVILLE France

**WEBSITE** [www.acb.be](http://www.acb.be)

**PHONE** +33 (0)6 74 59 03 63

**POINT-OF-CONTACT** : Kevin TASTETS, Group Sales Director  
[ket@acb.be](mailto:ket@acb.be), +33674590363

**TURNOVER** 7,5 M€

**WORK FORCE** 65

**SPACE TURNOVER** 0,71 M€

**SPACE WORK FORCE** 5