

Transversal competencies

Launchers

Satellites

Orbital systems



PYTHEAS Technology is an expert in design and manufacturing of innovative piezoelectric devices. Its field of competence mainly covers 3 types of application: Vibration control (dampers/isolators, energy harvesting, structural health monitoring); Ultrasonic devices (Non-destructive testing, flowmeter); Actuators (ultrasound motor, piezo-valves, piezo-pump)

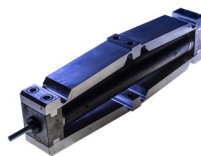
COMPETENCIES & CAPABILITIES

- Piezoelectric vibration dampers and isolators (semi-passive, frequency tunable)
- Embedded structural health monitoring, energy harvesting and non-destructive evaluation.
- Piezoelectric sensors (flowmeter, accelerometer, ultrasound probe)
- Piezoelectric actuators (positioners, valves, pump, de-icing system, ultrasonic motor (linear, rotation, spherical))

Piezoelectric high-speed valve



Vibration absorber



PYTHEAS TECHNOLOGY

PRODUCTS & SERVICES

PYTHEAS Technology proposes piezoelectric devices for:

- Vibration damping and isolations. Proprietary technologies are semi-passive and frequency tunable.
- Energy harvesting and self-supplied sensors
- Structural health monitoring and embedded non-destructive evaluation
- Ultrasonic flowmeter and ultrasound probe
- Linear actuators, linear, rotative and spherical ultrasonic motors
- Piezo-valves and piezo-pump

MAJOR SPACE PROJECTS & REFERENCES

Challenge R&D CNES laureate (2020): Embedded non-destructive evaluation system for future reusable satellite launchers.

PYTHEAS Technology develops an embedded sensor network using ultrasonic lamb waves for detection, localization, and identification of defects.

Main customers in space industry:

- CNES
- LIEBHERR Aerospace
- IXBLUE

POINT OF CONTACT

ADDRESS 100 impasse des houillères 13590 Meyreuil France

WEBSITE <http://pytheas-technology.com/>

PHONE +33 (0) 6 76 29 84 64

POINT-OF-CONTACT MOSCA Frédéric, CEO

frederic.mosca@pytheas-technology.com, +33 (0) 6 76 29 84 64

TURNOVER 1 M€

WORK FORCE 18 employees

SPACE TURNOVER 0.2 M€

SPACE WORK FORCE 8 employees