

Transversal competencies



With more than 50 years of experience, Systronic is the industrial specialist for manufacturing PCBs dedicated to the aerospace market for worldwide satellites and launchers.

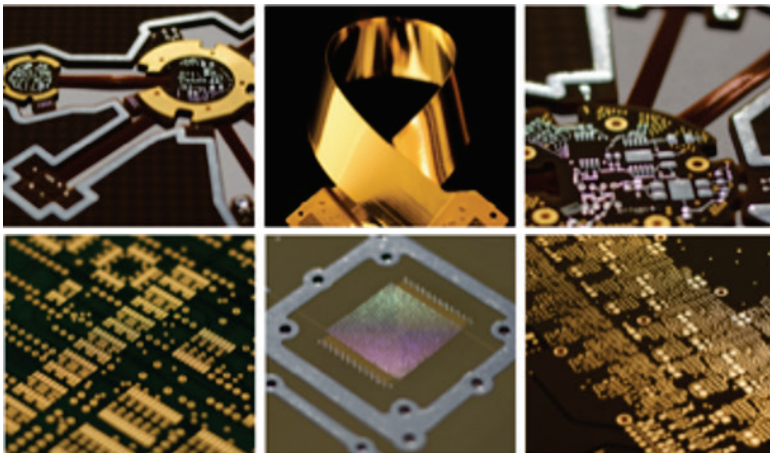
Being part of Cimulec group, our products are characterized by: a full range of qualification for industrial, aero-mil and space projects, a large technological range and background, high reliability, assistance from prototype to production.

COMPETENCIES & CAPABILITIES

Seven qualified technologies:

- Non sequential rigid with Epoxy HTg (ESA/CNES/ISRO)
- Non sequential rigid-flex with Epoxy HTg (ESA/CNES/ISRO)
- Sequential rigid with Polyimide (ESA/CNES)
- Sequential rigid flex with Polyimide (ESA/CNES)
- Single sided rigid with RT/Duroid 5880 (ESA/CNES)
- Double sided rigid with TMM10i (ESA/CNES)
- Non sequential rigid with RT/Duroid 6002 (CNES)

Supplemented with a range of complementary technologies like HDI and Hyper frequency technologies, mixed PTFE-Polyimide build-ups, internal heat sinks, embedded resistors...



SYSTRONIC – CIMULEC Group

PRODUCTS & SERVICES

Risk assessment expertise of PCB design

Design Rules Check methodology

Support of our prototyping plant in Toulouse, with duplicated manufacturing processes for short lead time EM according to Systronic rules.

Quick Turn Around service in Systronic for Qualification models and Flight models

LEMCI (Laboratory of Studies and Modeling for Printed Circuits): Joint laboratory dedicated to the reliability of printed circuit boards for high added value applications.

MAJOR SPACE PROJECTS & REFERENCES

Main customers:

- Airbus Defence and Space
- Thales Alenia Space
- Leonardo
- RUAG
- Safran Electronic and Defence
- ArianeGroup

Projects supported by the main space agencies:

- CNES, ESA, NASA, DLR, JAXA, ISRO, KARI, ...

POINT OF CONTACT

ADDRESS 6 avenue de l'Atlantique
91940 LES ULIS France

WEBSITE www.systronic.com

PHONE +33 (0)169077071

POINT-OF-CONTACT : MORINEAU, Jean-Claude, Commercial Director
jcmorineau@cimulecgroup.com, +33 (0)169077766

TURNOVER 8 M€

WORK FORCE 47

SPACE TURNOVER 6.5 M€

SPACE WORK FORCE 47