



Real-Time Macroeconomic Intelligence

Powered by Big Data Analytics

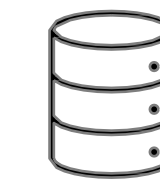
100+ TEAM SCRUTINISING BIG DATA & LEVERAGING AI TO EXTRACT VALUE

TEAM OF EXPERTS



- **70+ Data Scientists** in Economy, Computer Vision, Natural Language Processing and **20+ Quant Analysts**
- **25 nationalities** covering 18 different languages, including numerous dialects
- Direct Access to **250 researchers** through R&D projects

UNIQUE PARTNERSHIP WITH SPACE AGENCIES



EXCLUSIVE REAL-TIME DATALAKE

Textual data

- Social Media
- News
- Blogs
- Patents

Geolocation data

- Shipping Traffic
- Airline Traffic
- Corporate Assets
- Real Estate

Satellite data

- Earth Observation
- Radar
- Atmospheric

Structured data

- Prices of Goods
- Prices of Services
- Corporate Loans

TAKING THE PULSE OF THE ECONOMY



API
Web Portal

Daily estimate, non-revised and point in time

- ✓ Growth Nowcast
- ✓ Consumption Nowcast
- ✓ Commodity Nowcast
- ✓ Inflation Nowcast
- ✓ Manufacturing Nowcast
- ✓ Employment Nowcast

DELIVERING COMPETITIVE EDGES

- 1. Detect Trends – Ahead Of Market Consensus**
- 2. Anticipate – The Publication Of Official Numbers**
- 3. Up to 10 years history – For Daily Macro Data**
- 4. High correlation - With Official Data**
- 5. Extensive coverage – Developed And Emerging Markets**
- 6. Transparent Methodology - To Explain Key Drivers**



QuantCube Satellite images Analytics

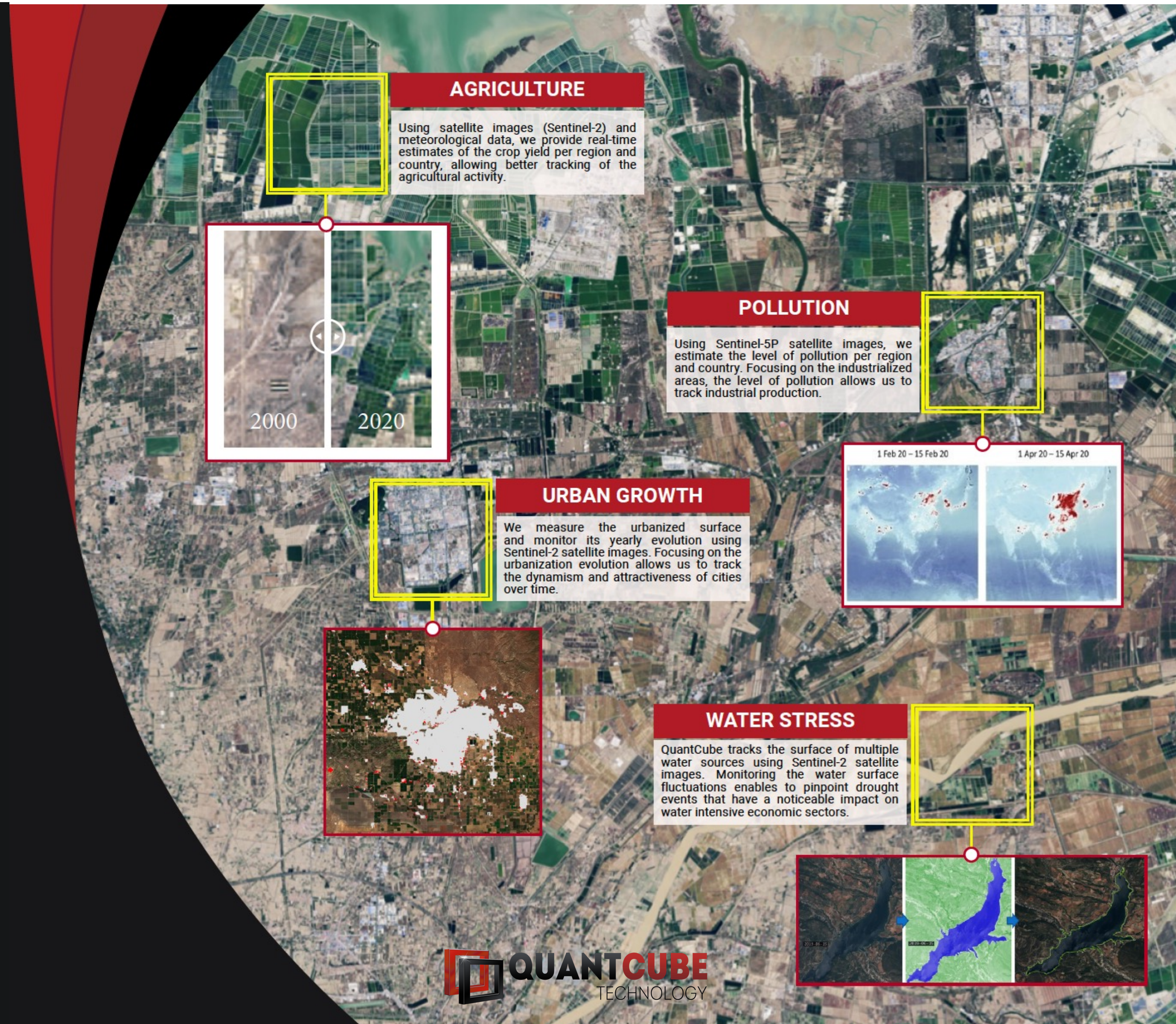
SATELLITE IMAGES ANALYTICS

Applications

Using **satellite data analytics**, QuantCube Technology added to the existing product QuantCube Macroeconomic Intelligence Platform a significant added value layer, allowing to provide a granular vision of the activity of each sector of the economy.

QuantCube Technology has developed a new methodology of creating high frequency industrial macro-indicators based on **satellite images** through its collaboration with the CNES.

- Urban Growth Index
- Pollution Monitoring
- Agriculture Yield Index
- Water Stress Monitoring
- Deforestation Monitoring
- Etc..



QUANTCUBE'S COLLABORATIONS WITH THE CNES

R&D & DEMONSTRATOR PROJECTS SINCE 2017

2 Projects R&T	1 Project SCO	1 Demonstrator with the ESA	1 Project financed by BPI
<i>Vehicles Detection¹ & Air Pollution Monitoring</i>	<i>FloodDAM²</i>	<i>Macroeconomic Intelligence with satellite images</i>	<i>AI4GEO³</i>

Our collaboration with the CNES helps us to:

- ✓ Develop a solid **expertise in satellite images analytics**
 - ✓ Position QuantCube at the **forefront of innovation**
 - ✓ Access **unique satellite datasets**
- ✓ Develop **new use cases** and research projects for civil applications
 - ✓ Position QuantCube apart from other players, particularly those outside Europe

RECENTS ARTICLES & PUBLICATIONS



“QuantCube Technology Launches Advanced Agricultural Yield Forecasts for Key Commodities”

A-Team Insight
March 6, 2024



“Pollution Reveals What Russian Statistics Obscure: Industrial Decline”

Wall Street Journal
Mai 5, 2023

1. [‘Vehicle detection and counting from VHR Satellites images’](#) published with CNES (French Space Agency) & IRISA – Oct 2020
2. [‘AI4GEO: Toward a global “3D Smart Map”’](#) published with CNES & IGN & ONERA & AIRBUS – 2021
3. [The SCO-FLOODDAM Project: Towards a Digital Twin for Flood Detection, Prediction and Flood Risk Assessments](#) published with CNES & JPL – 2023

QUANTCUBE'S COLLABORATIONS WITH THE CNES

2 examples of demonstrator projects: FloodDAM & AI4GEO

FloodDAM

18 months (2022-2024)

Co-financed at 75% by the CNES



AI4GEO

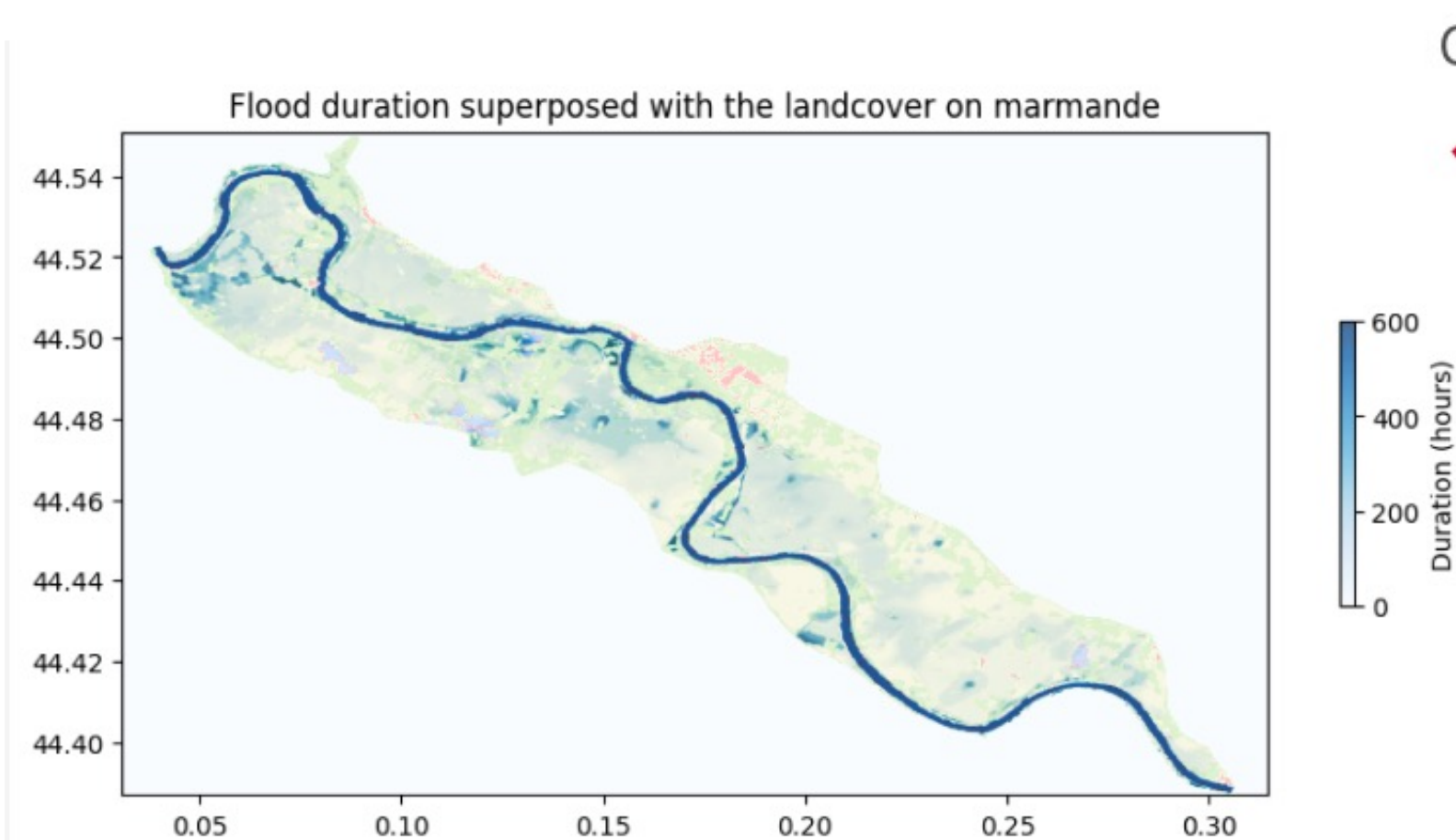
4 years (2019-2023)

Co-financed at 60% by BPI with 80% of recoverable advance and 20% of subvention

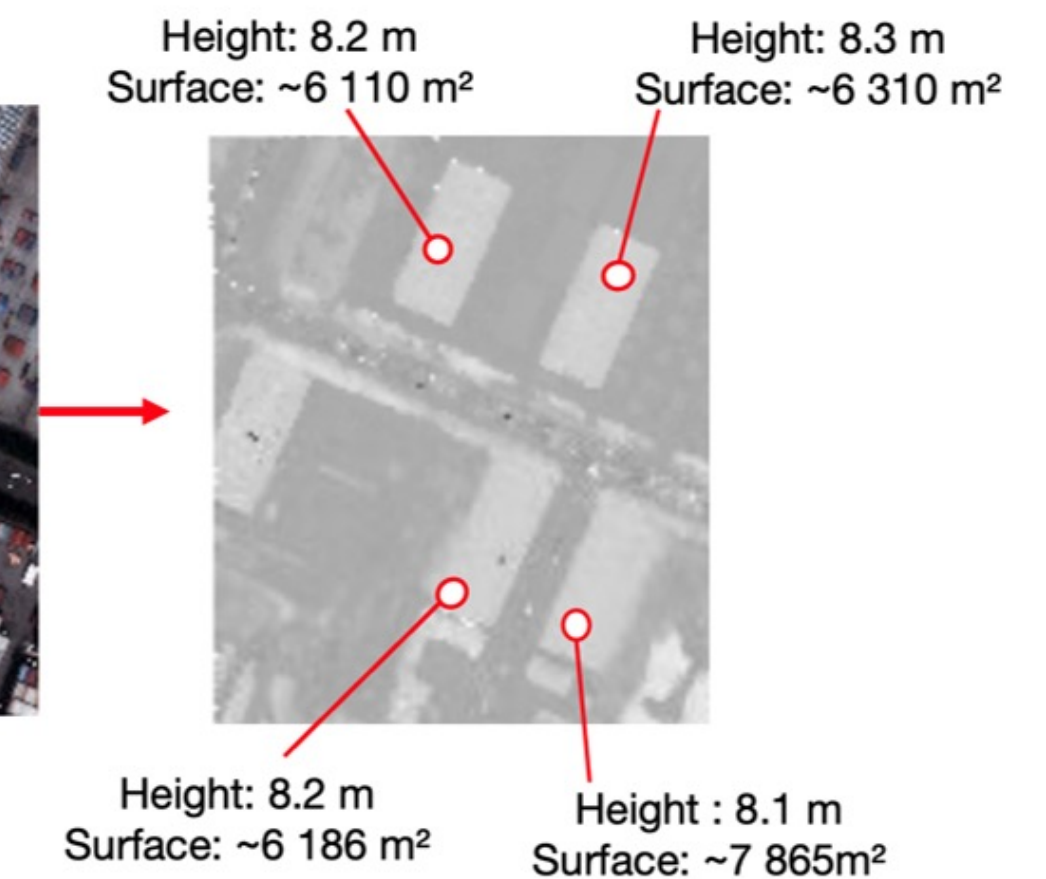


QuantCube combines FloodDam simulations with alternative data sources and QuantCube Asset Mapping database to estimate the financial risk of flooding of a region.

The AI4GEO project aims at developing an automatic solution for producing 3D geospatial information and new added-value services based on high resolution satellite images.



Cost Assessment
1 148 500\$
Agriculture



CONTACT



Ghizlaine Amrani
Co-Founder &
Chief Operating Officer

ghizlaine.amrani@quant-cube.com

Paris (France)
15 Boulevard Poissonnière
75002 Paris, FRANCE

New York (USA)
60 Broad Street, Suite 3502
New York, NY 10004, USA

For general enquiry:
info@quant-cube.com
www.quant-cube.com

DISCLAIMER

This document is provided solely for general informational purposes only and, while provided in good faith, does not purport to be comprehensive or include any representation, warranty, assurance or undertaking (express or implied). Nothing in this document is intended to be advisory or relied upon and no statement made shall have the effect to bind QuantCube, its affiliates or successors. Statements made herein are for illustrative purposes only and shall not be considered statements of fact, availability or reliability. Information provided herein has not been independently verified.

Furthermore, this document does not constitute an offer or invitation to partake in any transaction, or any other sale, purchase or recommendation of any securities or other product or service under any applicable laws. Any information contained in this document may only be used for your internal use, may not be reproduced or re-disseminated in any form and may not be used as a basis for or a component of any financial instruments, products or indices. Nothing in this document is intended to provide tax, legal, or investment advice. The recipient of this document understands and agrees that this document contains information of a confidential nature and is legally protected from disclosure to any third party apart from the intended recipient.

This document is provided on an “as is” basis and the recipient of this information assumes the entire risk of any use made of any information or statement contained herein. Historical data and analysis should not be taken as an indication or guarantee of any future availability, performance analysis, forecast or prediction. The views expressed regarding market and economic trends are subject to change at any time based on market and other conditions, and there can be no assurance that countries, markets or sectors will perform as expected. All statements made are subject to change and all products and information are subject to availability. No assurances are made in this document that all such products shall be available as stated and QuantCube reserves the right to change the availability and composition of any product referenced herein.

Investment involves risks, including market, political, liquidity and currency risks. In no event shall QuantCube or any person involved in the production of this document have any liability whatsoever for any direct, indirect, special, incidental, punitive, consequential (including, without limitation, lost profits) or any other damages in relation to, without limitation, the adequacy, accuracy, completeness or reasonableness of this document.

This presentation contains intellectual property rights and proprietary, confidential information belonging to QuantCube, and may not be copied, shared, reproduced or otherwise retained in any way.