



Transversal competencies

With more than 50 years of experience, Systronic is the industrial specialist for manufacturing PCBs dedicated to the aerospace market for worldwide satellites and launchers.

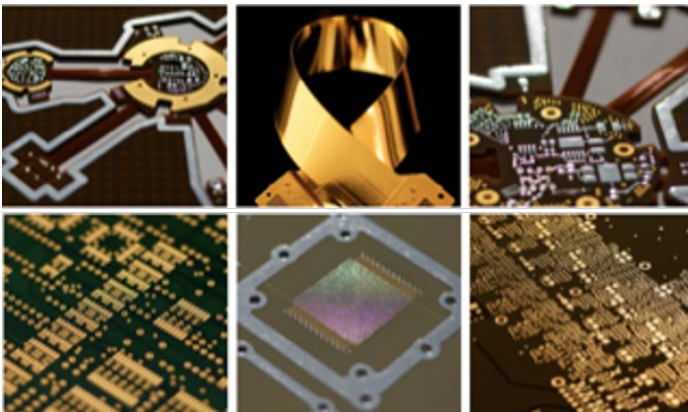
Being part of Cimulec group, our products are characterized by: a full range of qualification for industrial, aero-mil and space projects, a large technological range and background, high reliability, assistance from prototype to production.

COMPETENCIES & CAPABILITIES

Eight ESA qualified technologies:

- Non sequential rigid with Epoxy HTg
- Non sequential rigid-flex with Epoxy HTg
- Sequential rigid with Polyimide
- Sequential rigid flex with Polyimide
- Single sided rigid with RT/Duroid 5880
- Double sided rigid with TMM10i
- Sequential rigid Mixed Polyimide/PTFE
- Non sequential rigid with PTFE

Supplemented with a range of complementary technologies like HDI and Hyper frequency technologies, mixed PTFE-Polyimide build-ups, internal heat sinks, embedded resistors...



SYSTRONIC – CIMULEC Group

PRODUCTS & SERVICES

PCB (Printed circuit board) manufacturer.

Risk assessment expertise of PCB design - Design Rules Check methodology.

Support of our prototyping plant in Toulouse, with duplicated manufacturing processes for short lead time EM according to Systronic rules.

Quick Turn Around service in Systronic for Qualification models and Flight models.

Simulation of PCB structure fatigue through modeling.

LEMCI (Laboratory of Studies and Modeling for Printed Circuits): Joint laboratory dedicated to the reliability of printed circuit boards for high added value applications.

MAJOR SPACE PROJECTS & REFERENCES

Main customers:

- Airbus Defence and Space
- Thales Alenia Space
- Leonardo
- Kongsberg Norspace Aerospace
- ArianeGroup
- Safran Electronic and Defence

Projects supported by the main space agencies:

- CNES, ESA, NASA, DLR, JAXA, ISRO, KARI, ...

POINT OF CONTACT

ADDRESS	6 avenue de l'Atlantique 91940 LES ULIS France
WEBSITE	www.systronic.com
PHONE	+33 (0)169077071
POINT-OF-CONTACT:	ROY Vincent, Commercial Director vroy@cimulecgroup.com / syssales@cimulecgroup.com
TURNOVER	8 M€
WORK FORCE	55
SPACE TURNOVER	7 M€
SPACE WORK FORCE	55